

Corvill Court 29
Shelley Road
Worthing
BN11 4DF



CALLAWAYS
RESIDENTIAL
SALES & LETTINGS

Corvill Court 29 Shelley Road

£235,000

The property is Leasehold

COMMUNAL HALLWAY

Outside entry phone, double glazed doors, communal gardens, shrubs, trees, laid to lawn, inner door leading to inner communal hallway

INNER COMMUNAL HALLWAY

Lifts to all floors, side entrance to rear garden

PRIVATE INNER HALLWAY

Entry door, spy hole, doorbell camera, ceiling with coving, textured ceiling, 2 x single radiators, 1 x single fitted built in cupboard with shelving and hanging space, 1x additional single fitted built in cupboard with shelving only, wall light, ceiling light, shelf above radiator, entry phone wall mounted, thermostat wall mounted.

CLOAKROOM

Wall mounted extractor, low level flush and handbasin with tiled splashback and shelf, vinyl flooring, textured ceiling

BATHROOM AND SEPARATE SHOWER

Part tiled bathroom provides bath, low level WC, pedestal wash basin. Separate fully tiled walk-in enclosed TRITON SEVILLE shower. Textured ceiling, vinyl flooring.

LOUNGE - DINING ROOM

A sunny, L-shaped reception room greets you. Double glazed full length patio doors provide access to the private patio and communal garden. Textured ceiling with coving, double glazed window, 1 x single radiator, 1 x double radiator, electric fireplace with surround, 4x wall lights.

KITCHEN

Textured ceiling, part tiled, fitted storage cupboard, single radiator, electric sockets; gas hob with extractor hood above, range of floor and wall cupboards, space for oven, vinyl flooring, single stainless steel drainer with mixer taps, Worcester boiler; double glazed windows, door to side garden.

BEDROOM 1

A large single/small double bedroom offers additional space for a member of the family or staying guest or could be used as an office/study. Fitted wardrobes, textured ceiling with coving, vinyl flooring, double glazed window, single radiator, ceiling light and wall light.

MAIN BEDROOM

Double bedroom with fitted wardrobe with shelving and hanging space; textured ceiling with coving, single radiator, double glazed window, vinyl flooring; 2x wall lights, 1 ceiling light, view over rear communal garden, electrical sockets.

Local Authority

Worthing Borough Council

Council Tax Band D

EPC Rating D



Contact

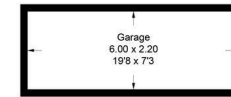
01273-735237

enquiries@callaways.co.uk

www.callawaysestateagents.co.uk

Flat 2, Corvill Court, Worthing

Approximate Gross Internal Area = 80.5 sq m / 866 sq ft
Garage = 13.2 sq m / 142 sq ft
Total = 93.7 sq m / 1008 sq ft



(Not Shown In Actual Location / Orientation)

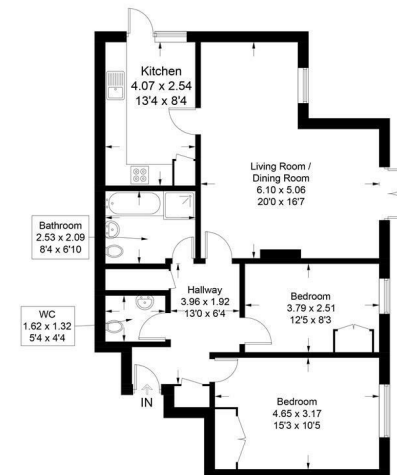


Illustration for identification purposes only, measurements are approximate, not to scale. Fourlabs.co © (D1146522)