

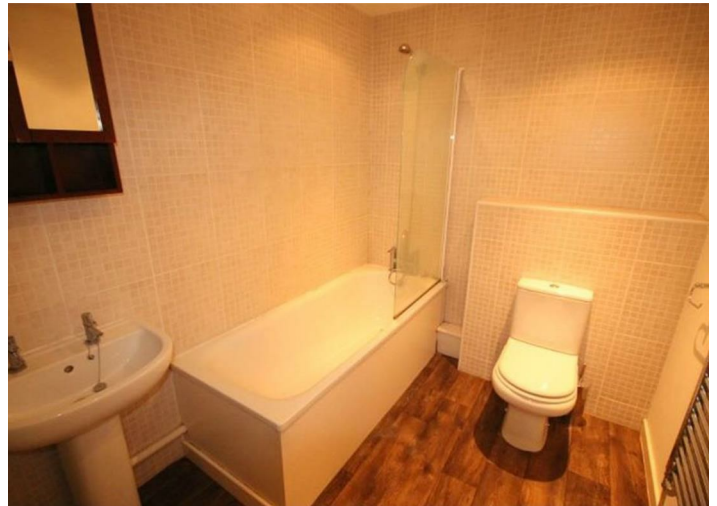
46 Denmark Villas

Hove

BN3 3TE



CALLAWAYS
RESIDENTIAL
SALES & LETTINGS



46 Denmark Villas

£1,850 PCM

Lounge

16' 1" x 13' 9" (4.91m x 4.18m) West facing sash windows overlooking front garden, wooden floors, radiator, power points, blinds

Kitchen

Wooden Floors, door leading to front garden, wall units, floor units, worktop, south facing window, part tiled walls, four ring gas hob, electric oven, extractor fan, boiler, radiator, power points, washing machine and dishwasher.

Bathroom

8' x 6' 3" (2.44m x 1.91m) Wooden floors, pedestal toilet, part tiled walls, bathtub with overhead shower, shower screen, sink basin, cupboard storage, heated towel rail, shower point

Hallway

15' 3" x 3' 1" (4.64m x 0.95m) Wooden floors, thermostat, radiator, doors leading to all rooms, power points

Bedroom one

14' 10" x 13' 10" (4.52m x 4.22m) East Facing sash windows overlooking private garden, door leading to east facing garden, carpets, radiator, power points

En Suite

7' x 5' 2" (2.14m x 1.58m) Tiled flooring, part tiled walls, heated towel rail, walk in shower, pedestal toilet, sink basin with taps, shaver point

Bedroom two

9' 9" x 7' 10" (2.98m x 2.40m) carpets, radiator, power points, south facing sash windows, blinds

Bedroom three

9' 7" x 7' 9" (2.93m x 2.37m) Carpets, radiator, power points, south facing sash windows, blinds

Other information

EPC rating C

Council Tax band C

Parking zone N

Unfurnished

Garden

1 week's holding deposit required

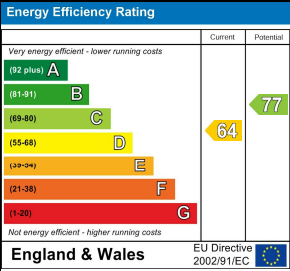
12 month contract

Security Deposit £2250.00

Please note: This property does not hold an HMO licence and is therefore not suitable for multiple unrelated tenants.

Local Authority
Brighton & Hove

Council Tax Band
C



Agents Note: Whilst every care has been taken to prepare these particulars, they are for guidance purposes only. All measurements are approximate and are for general guidance purposes only and whilst every care has been taken to ensure their accuracy, they should not be relied upon and potential buyers/tenants are advised to recheck the measurements

CALLAWAYS

RESIDENTIAL
SALES & LETTINGS



Callaways Lettings

North & South Studios 3

Wilbury Grove

Hove

Brighton & Hove



Contact

01273-735237

enquiries@callaways.co.uk

www.callawaysestateagents.co.uk

